

1) CONSTRUCTION:

CONDUCTOR: 26 AWG 7/34 STRANDED TINNED COPPER
 INSULATION: HIGH DENSITY POLYETHYLENE, .009" NOM. WALL THICKNESS
 PAIRS: COLOR CODED SINGLES TWISTED INTO PAIRS
 CABLE: (4) TWISTED PAIRS TWISTED TOGETHER AND WRAPPED WITH A CLEAR POLYESTER BINDER TO FORM A CABLE CORE.
 SHIELDS: AN OVERALL ALUMINIZED POLYESTER FOIL SHIELD (FOIL OUT, 100% COVERAGE) SHALL BE APPLIED OVER THE CABLE CORE AND SHALL CONTAIN A 26 AWG 7/34 STRANDED TINNED COPPER DRAIN WIRE IN CONTACT WITH THE METALIZED SURFACE. A SECOND SHIELD OF 38 AWG TINNED COPPER BRAID (85% MINIMUM COVERAGE), SHALL BE APPLIED OVER THE FOIL SHIELD.
 JACKET: POLYVINYLCHLORIDE, (**COLOR, PER CHART 1**), .026" NOM. WALL THICKNESS
 OVERALL CABLE DIAMETER

NOM. DIA.
 .019"
 .036" (± .001")
 .072"
 .153"
 .173" MAX.
 .217" (± .010")
 (BY PI TAPE)

2) PHYSICAL PROPERTIES:

TEMPERATURE RATING, MAX. 75°C
 TEMPERATURE RATING, MIN. -20°C
 WT./M', NOM., NET. 31.8 LBS.

CHART 1:

QUABBIN P/N	JACKET COLOR
2510	BLUE
2511	WHITE
2512	BEIGE
2513	LIGHT GRAY
2514	YELLOW

3) ELECTRICAL CHARACTERISTICS:

SEE PAGE 2

4) AGENCY APPROVALS:

NEC (UL) TYPE CM
 CEC C(UL) TYPE CM

5) APPLICATION:

SHIELDED PATCH CABLE TO SUPPORT SCREENED TIA-568.2-D CATEGORY 5e APPLICATIONS.
 RoHS COMPLIANT MATERIALS.

6) PRINT: (BLACK INK)

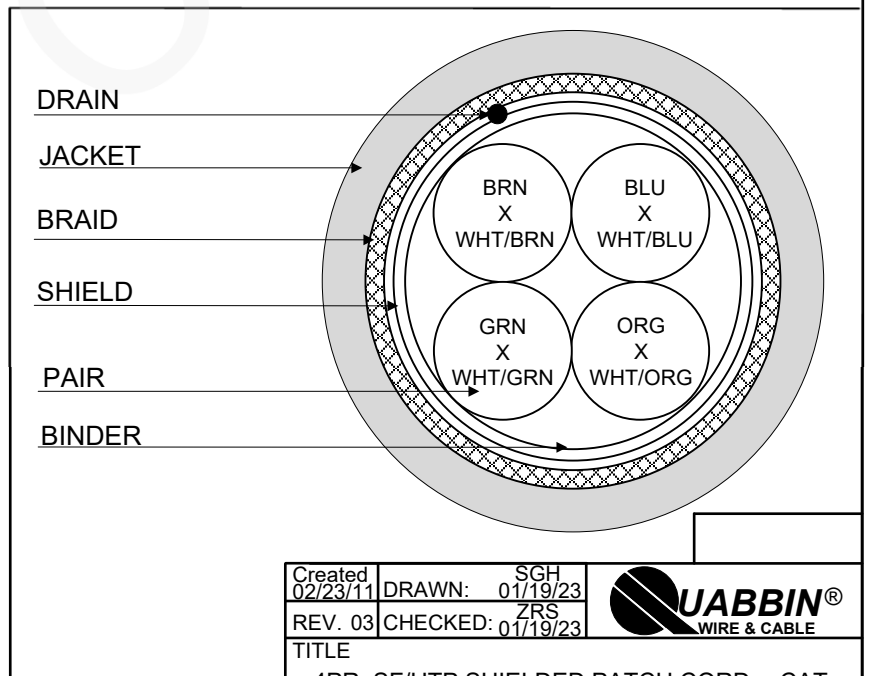
QUABBIN DATAMAX CAT 5e SF/UTP PATCH CORD ISO 11801 P/N (**P/N PER CHART 1**) -- TYPE CM C(UL)US 4 PR 26 AWG 75C -- RoHS -- (**LOT DESIGNATOR**) (**SEQUENTIAL FOOTAGE**)

7) COLOR CODE:

1. BLUE X WHITE/BLUE
2. ORANGE X WHITE/ORANGE
3. GREEN X WHITE/GREEN
4. BROWN X WHITE/BROWN

8) PACKAGING:

TO BE PACKAGED AS PER QWC'S STANDARD PACKAGING



CUSTOMER APPROVAL:

DATE:


Created 02/23/11	DRAWN: SGH 01/19/23	
REV. 03	CHECKED: ZRS 01/19/23	
TITLE 4PR. SF/UTP SHIELDED PATCH CORD -- CAT 5e -- TYPE C(UL)US CM		
DRAWING#: QWC0016		1 of 2

3) ELECTRICAL CHARACTERISTICS:

CAPACITANCE, MUTUAL, NOM.	13.5 PF/FT. AT 1 MHz
DIELECTRIC WITHSTANDING, MIN.	1500V RMS
VOLTAGE RATING, MAX.	300V
D.C. RESISTANCE, MAX.	42.6 Ω/1,000'

NOTE: TESTING FOR THE FOLLOWING IS CONDUCTED OFF THE REEL. (FOR 100m OF CABLE)

IMPEDANCE,	100 ± 15 Ω	1 - 100 MHz
IMPEDANCE, SMOOTHED	100 ± 10 Ω	TYPICAL 5 - 100 MHz
RETURN LOSS	1 ≤ f < 10 MHz	20 + 5 LOG(f) dB MIN
	10 ≤ f < 20 MHz	25 dB MIN
	20 ≤ f ≤ 100 MHz	25 - 8.6 LOG(f/20) dB MIN
PS NEXT	1 ≤ f ≤ 100 MHz	32.3 - 15 LOG(f/100) dB MIN
NEXT	1 ≤ f ≤ 100 MHz	35.3 - 15 LOG(f/100) dB MIN
PS ACRF	1 ≤ f ≤ 100 MHz	20.8 - 20 LOG(f/100) dB MIN
ACRF	1 ≤ f ≤ 100 MHz	23.8 - 20 LOG(f/100) dB MIN
INSERTION LOSS	1 ≤ f ≤ 100 MHz	1.5[1.967√f + 0.023(f) + 0.050/√f] dB MAX
DELAY	1 ≤ f ≤ 100 MHz	534 + 36/√f ns MAX
DELAY SKEW	1 ≤ f ≤ 100 MHz	<45 ns
VELOCITY OF PROPAGATION	71%	

Created 02/23/11	DRAWN: SGH 01/19/23	
REV. 03	CHECKED: ZRS 01/19/23	
TITLE 4PR. SF/UTP SHIELDED PATCH CORD -- CAT 5e -- TYPE C(UL)US CM		
DRAWING#:		QWC0016
		2 of 2

CUSTOMER APPROVAL:

DATE: